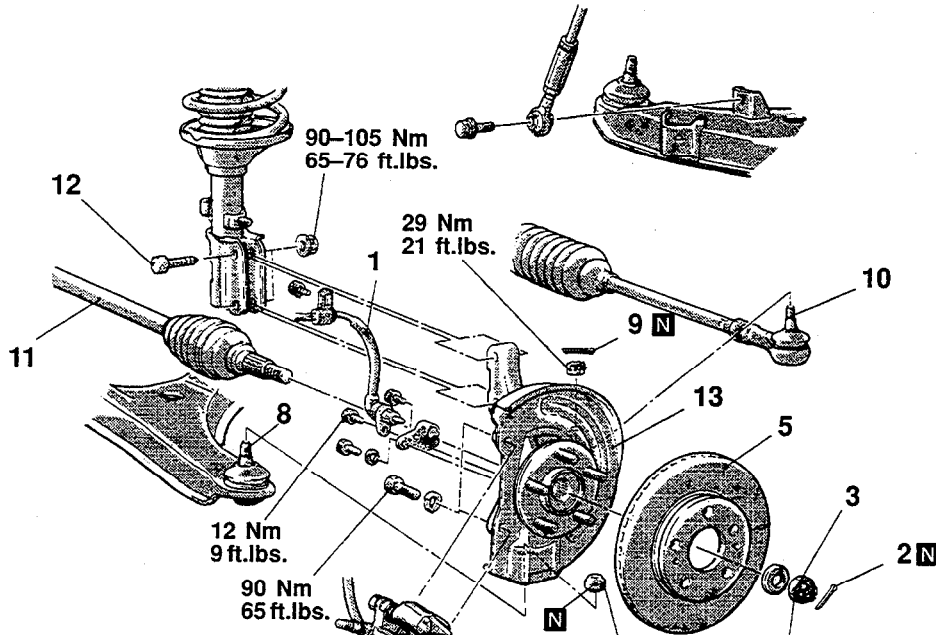


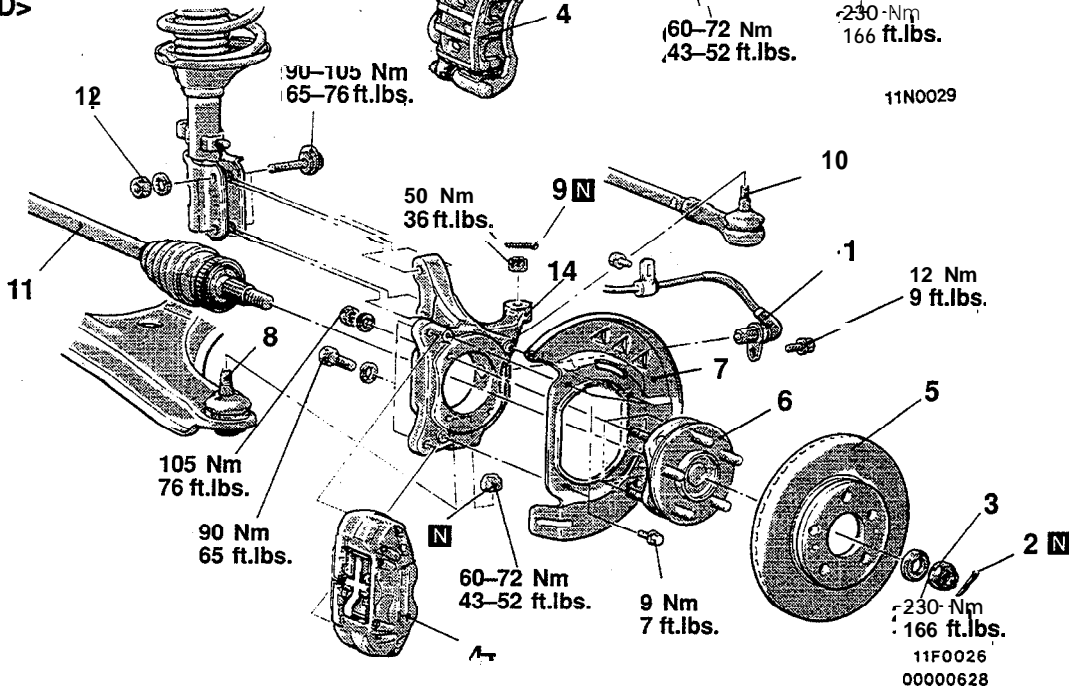
HUB AND KNUCKLE

REMOVAL AND INSTALLATION

<FWD>



<AWD>



11N0029

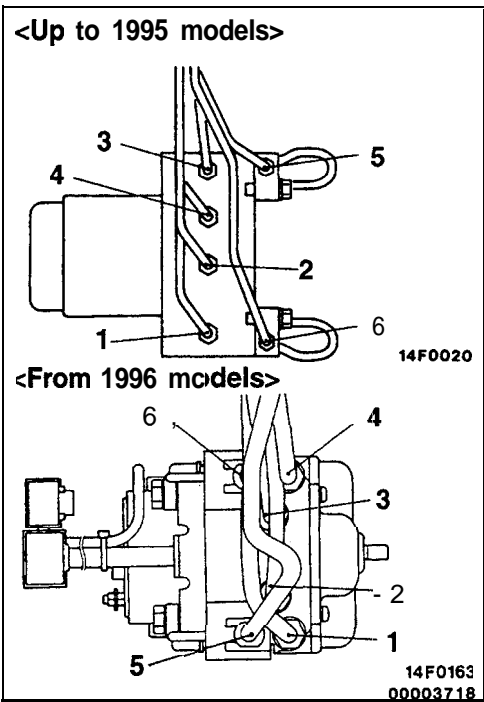
11F0026
00000628

Removal steps

- | | | | |
|---|--|----------------------------------|--|
| <p>◀A▶</p> <p>▶A▶</p> <p>▶A▶</p> <p>▶B▶</p> <p>▶C▶</p> <p>▶D▶</p> | <ol style="list-style-type: none"> 1. Front speed sensor connection
<Vehicles with ABS*> 2. Cotter pin 3. Drive shaft nut 4. Caliper assembly 5. Brake disc 6. Front hub unit bearing 7. Dust shield 8. Lower arm ball joint connection 9. Cotter pin | <p>◀E▶</p> <p>◀F▶</p> <p>◀G▶</p> | <ol style="list-style-type: none"> 10. Tie rod end connection 11. Drive shaft 12. Front strut mounting bolt 13. Hub and knuckle 14. Hub |
|---|--|----------------------------------|--|

NOTE
*: Anti-lock braking system

TSB Revision



INSTALLATION SERVICE POINT

▶◀ TUBE TO HYDRAULIC UNIT CONNECTION

Connect the tubes to the HU as shown in the illustration.

<Up to 1995 models>

- 1. HU – front brake (L.H.)
- 2. HU – rear brake (R.H.)
- 3. HU – front brake (R.H.)
- 4. HU – rear brake (L.H.)
- 5. Master cylinder – HU (for left front and right rear)
- 6. Master cylinder – HU (for right front and left rear)

<From 1996 models>

- 1. HU – front brake (L.H.)
- 2. HU – rear brake (R.H.)
- 3. H U – rear brake (L.H.)
- 4. HU – front brake (R.H.)
- 5. Master cylinder – HU (for left front and right rear)
- 6. Master cylinder – HU (for right front and left rear)

INSPECTION

- Check the brake tubes for cracks, crimps and corrosion.
- Check the brake hoses for cracks, damage and leakage.
- Check the flared brake line nuts for damage and leakage.

FRONT DISC BRAKE

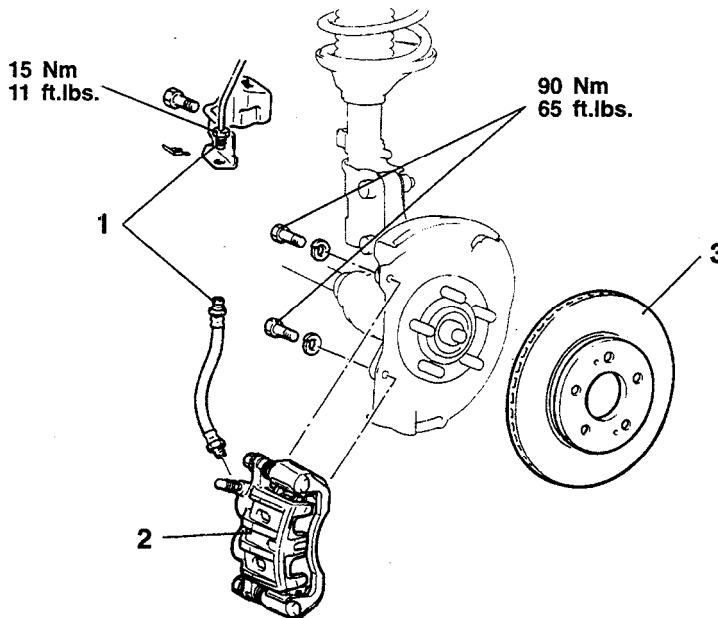
REMOVAL AND INSTALLATION

Pre-removal Operation

- Brake Fluid Draining

Post-installation Operation

- Brake Fluid Supplying
- Bleeding (Refer to P.35-66.)



Z14N0140

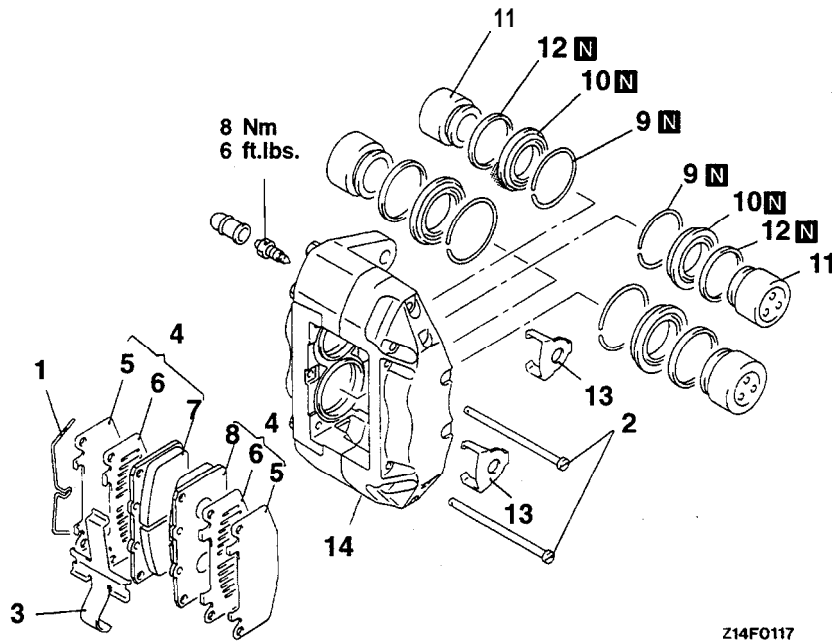
Removal steps

- 1. Connection for brake hose and the brake tube

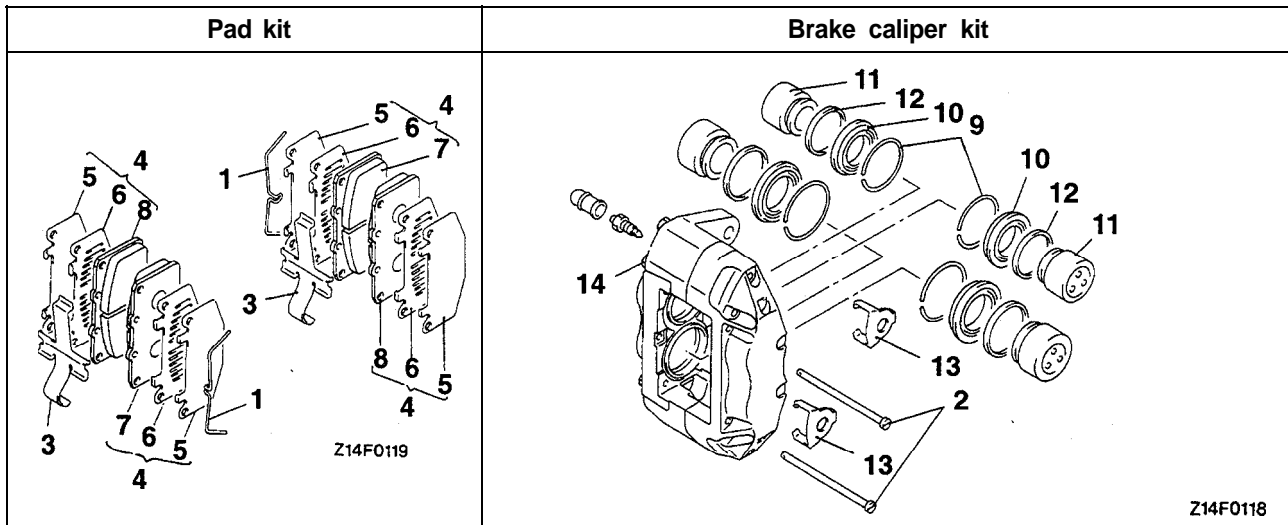
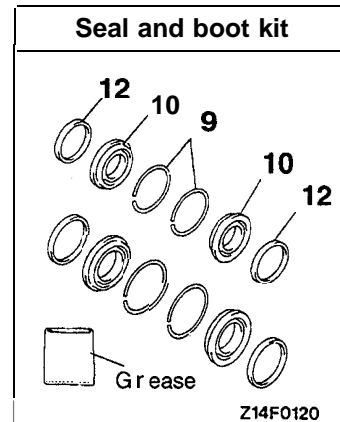
- ▶◀ 2. Front brake assembly
- 3. Brake disc

TSB Revision

DISASSEMBLY AND REASSEMBLY <AWD>



Z14F0117
00002144



Disassembly steps

- A** 1. Clip
- B** 2. Pad pin
- 3. Cross spring
- 4. Pad assembly
- 5. Shim A
- 6. Shim B
- 7. inner pad (with wear indicator)

- C** 8. Outer pad
- D** 9. Retaining ring
- 10. Piston boot
- 12.11. Piston Piston seal
- 13. Washer
- 14. Caliper body